

SmartDIH

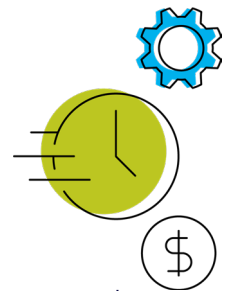
Any App. Any Data. One Simple Hub

Quickly launch highly demanding real-time apps easily, at scale and cost-effectively – with a proven out-of-the-box solution.

Shorten time to value to just weeks

Building on GigaSpaces' vast expertise in real-time data architecture, SmartDIH combines diverse capabilities into one cohesive and expertly implemented hub that guarantees exceptional performance, data consistency and scalability delivered rapidly in a cost-efficient off the shelf platform.

Utilizing standard tools, SmartDIH simplifies deployment and overcomes the technical challenges, organizational hurdles and runaway costs of multi-team initiatives. **The result: speedy time to value – without the high costs, endless project crawl and skills shortages typically associated with DIY projects.**



Get the flexibility to quickly deliver new offers

SmartDIH lets you keep ahead of market opportunities by giving you the flexibility and agility to quickly deliver new offers.

Offering open platform design, SmartDIH delivers ease of use and flexibility, with the option to expose data services via no-code SQL or develop complex Java-based data services.

With its standard integration methods, SmartDIH empowers you to develop apps using the tools of your choice while ensuring streamlined, fast and hassle-free deployment.



Assure ultra high performance - even at peak times

SmartDIH has got your back: Relying on its proprietary in-memory capabilities, smart tiering and distributed architecture, it supports high-volume data access and enables thousands of transactions per second, letting you plan efficiently for peak usage times. By storing frequently accessed data in memory when needed, SmartDIH reduces latency and delivers superb response times for real-time applications.

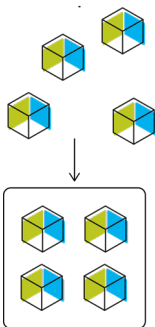
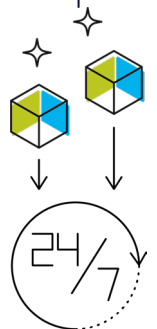
The result: optimal performance and ultra-low latency with predictable planning for surges in extreme usage peaks.

Power real-time workloads with continuously fresh data

Leveraging event-driven architecture and CDC technology, SmartDIH powers real-time workloads with fresh, consistent 24x7 data.

By decoupling frontend apps from data sources, SmartDIH ensures data is always available and reduces dependencies on backend systems, protecting them from overload and lowering direct API calls.

Designed to guarantee the most stringent SLAs, SmartDIH offers full redundancy with no single point of failure for highly demanding real-time apps.



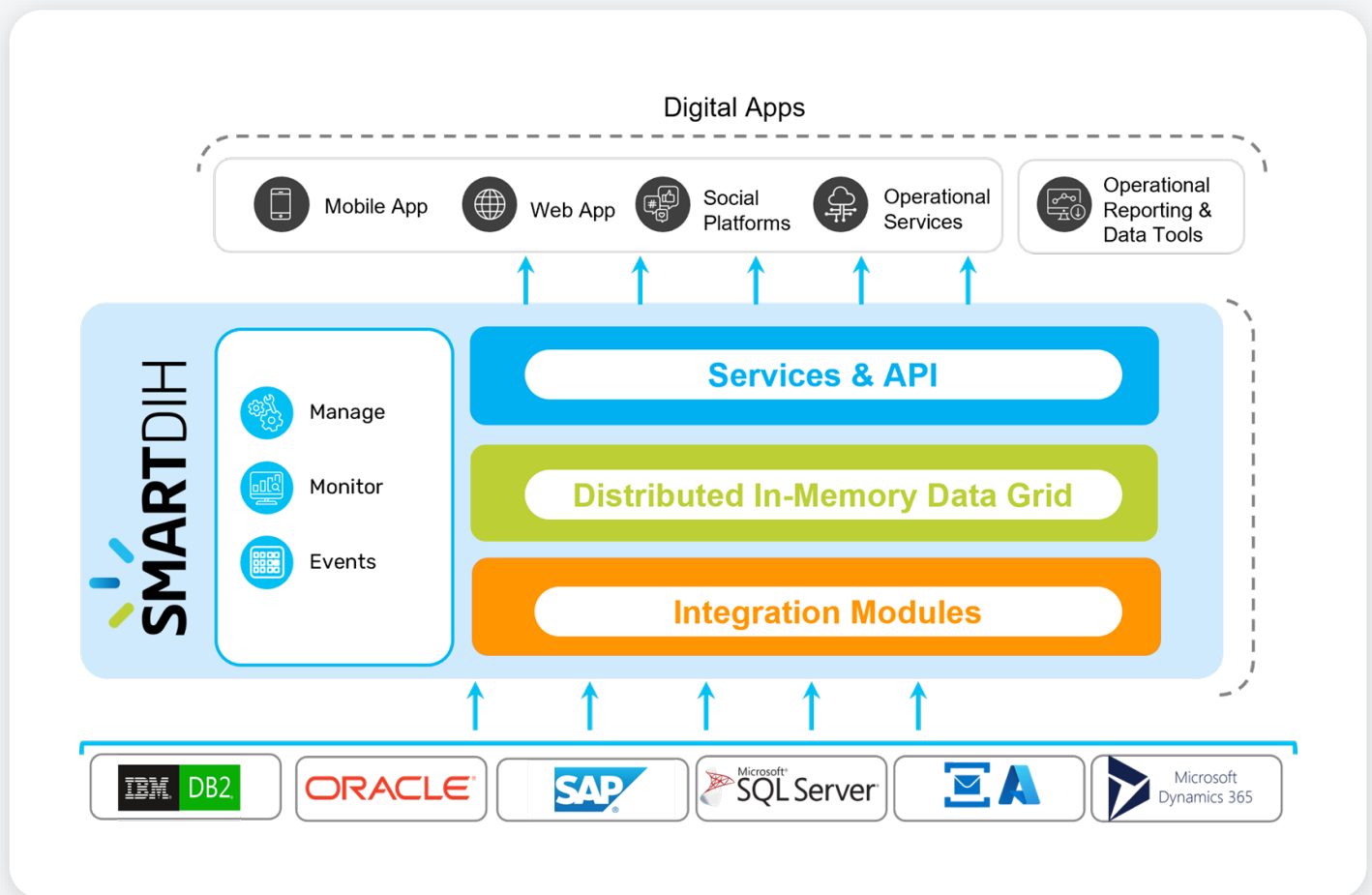
Empower operations with a real-time unified data view

Unlike other solutions, SmartDIH consolidates multiple, disparate data sources – whether complex legacy systems or modern cloud services – into one unified highly performant data layer, which decouples backend systems from frontend apps.

The result: a coherent view and single access point to multiple data sources, with the power to build frontend apps directly over our highly performant unified data layer.



SmartDIH Architecture



- **Speedy TT:** Off-the-shelf platform eliminates the high costs, project crawl and skills shortages of DIY projects
- **Superb performance:** In-memory computing, smart tiering & distributed architecture, enables thousands of TPS with mS latency
- **Flexibility to deliver:** Open platform design, low-code or custom tools suit varying skill sets, optimizing dev cycles
- **Unified view of real-time data:** Get a coherent view & single access point to data from multiple sources
- **Data Freshness:** Event-driven design with embedded CDC guarantees 24x7 fresh and available data

About GigaSpaces

GigaSpaces is a global pioneer in in-memory computing with solutions that simplify an organizations' digital transformation, enabling them to develop and launch digital services at a rapid pace. GigaSpaces technology unleashes the power of customers' data by transforming data silos into assets, turning organizations into digital-first, data-driven enterprises.

GigaSpaces offices are located in the US, Europe, and Israel, serving customers such as American Airlines, Morgan Stanley, Bank of America, CSX, Goldman Sachs, Societe Generale, Credit Agricole, Avanza Bank, Avaya, CLSA, and UBS. GigaSpaces is an IBM Gold Partner and has business partnerships with Boomi, Capgemini, and Cognizant.

For more information visit gigaspaces.com